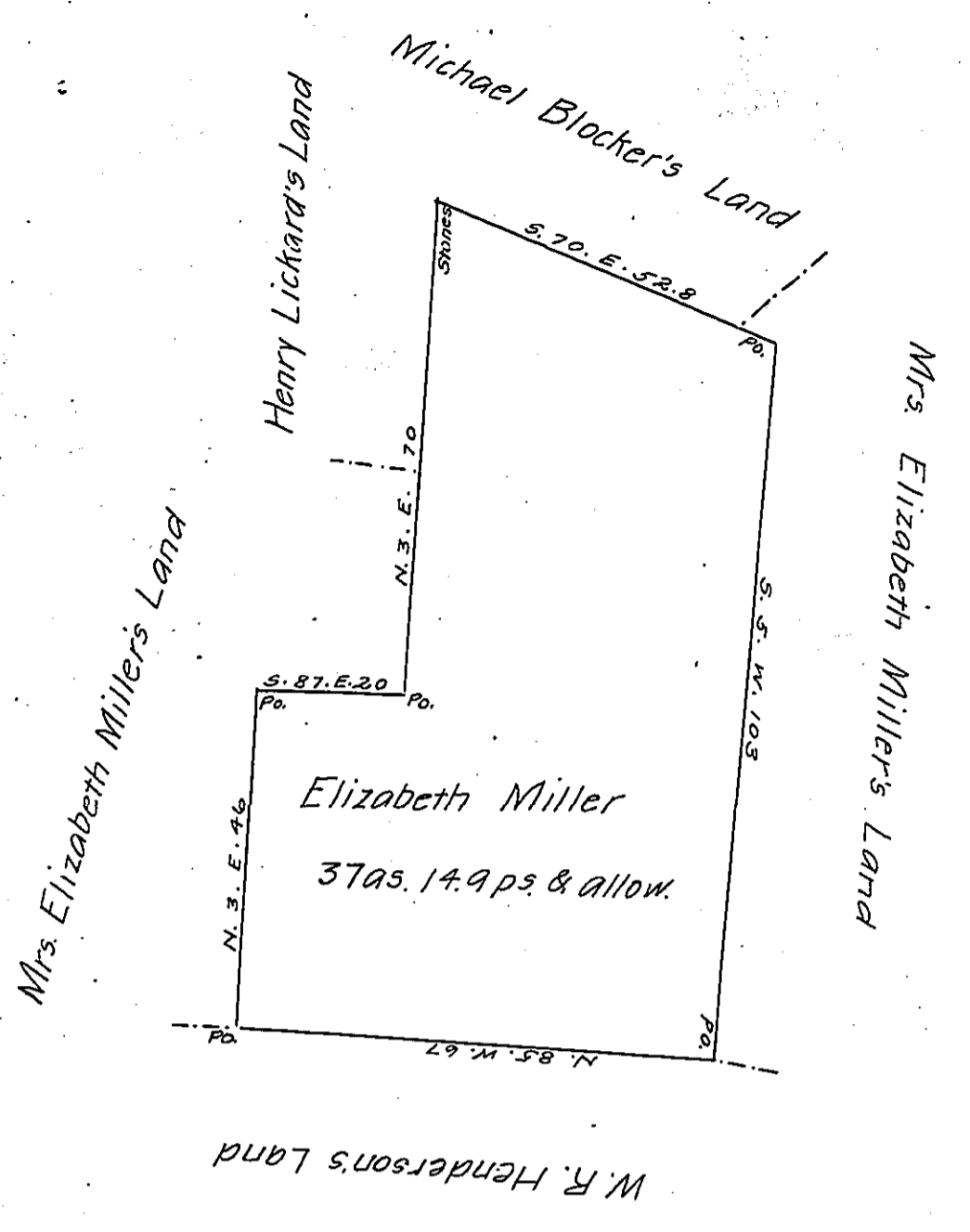


FORM NO. 1.



A Draft of a tract of land situated in the Township of Fairfield and County of Westmoreland, containing thirty seven acres, fourteen & 9/10 perches and allowance of six per cent. for roads, etc. Surveyed the twentieth day of January 1896, in pursuance of a warrant granted to Elizabeth Miller dated the 28th. day of March 1895.

W. R. Barnhart for

To James W. Latta Esq, }
 Secretary of Internal Affairs. } County Surveyor

Approved, Jan. 24th. 1896

J. Jack Neel

C.S.

IN TESTIMONY that the above is a copy of the original remaining on file in the Department of Internal Affairs of Pennsylvania, made conformably to an Act of Assembly approved the 16th day of February, 1833, I have hereunto set my Hand and caused the Seal of said Department to be affixed at Harrisburg, this thirtieth day of March 1906

James W. Latta
 Secretary of Internal Affairs.